



MINISTRY OF  
**EDUCATION**  
GOVERNMENT OF INDIA

# District Report Card for Aspirational Districts

## FATEHPUR (Uttar Pradesh)

Percentage of student performing below basic

**32%**



### INTRODUCTION

The District Report Card (DRC) presents the academic achievement of school students at the District Level along with the participation rate of students and schools in the National Achievement Survey (NAS). The DRC communicates the findings of the NAS for classes III, V, VIII and X.



MINISTRY OF  
**EDUCATION**  
GOVERNMENT OF INDIA

**NAS 2017**

National Achievement Survey  
**Class III, V, VIII and X**

**District Report Card for  
Aspirational Districts  
FATEHPUR (Uttar Pradesh)**

विद्यया ऽ मृतमश्नुते



एन सी ई आर टी  
NCERT

राष्ट्रीय शैक्षिक अनुसंधान और प्रशिक्षण परिषद्  
NATIONAL COUNCIL OF EDUCATIONAL RESEARCH AND TRAINING

ISBN 978-93-5580-067-1

## NAS 2017-18

Classes III, V, VIII and X

District Report Card for Aspirational Districts FATEHPUR (Uttar Pradesh)

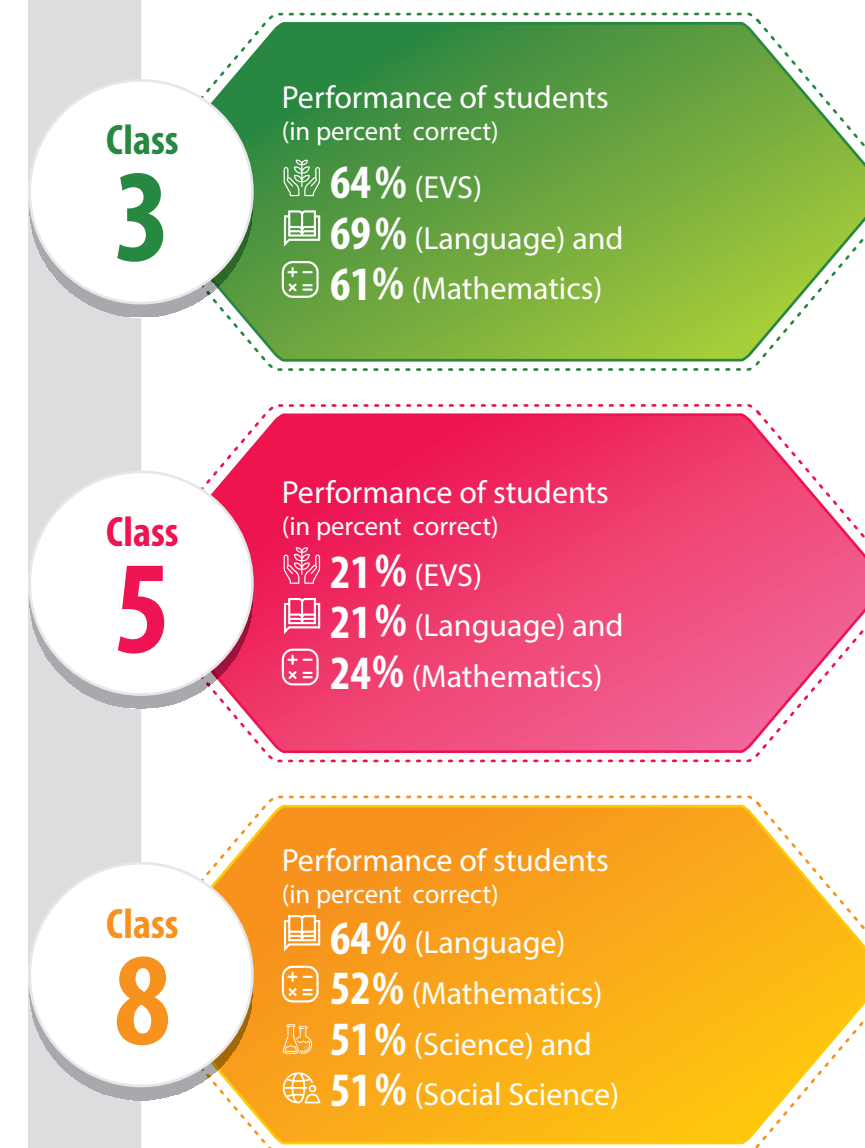
First Edition

October 2021 Ashwina 1943

© National Council of Educational Research and Training, 2021

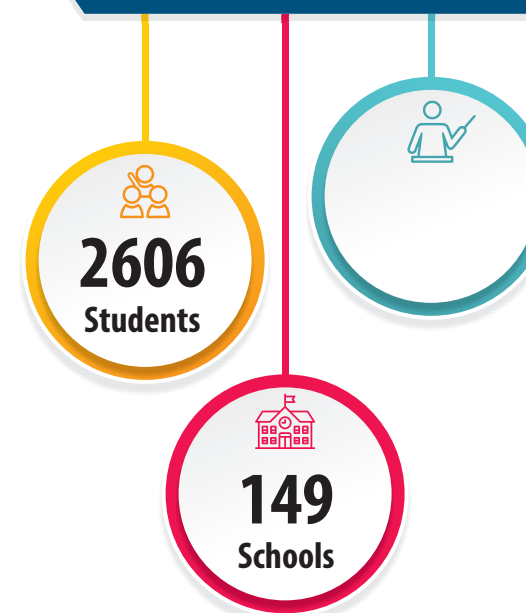
*All rights reserved. No part of this report may be reproduced in any form or by any electronic or mechanical means – except in the case of brief quotations embodied in articles or reviews – without written permission from its publisher.*

# Highlights



## Participation

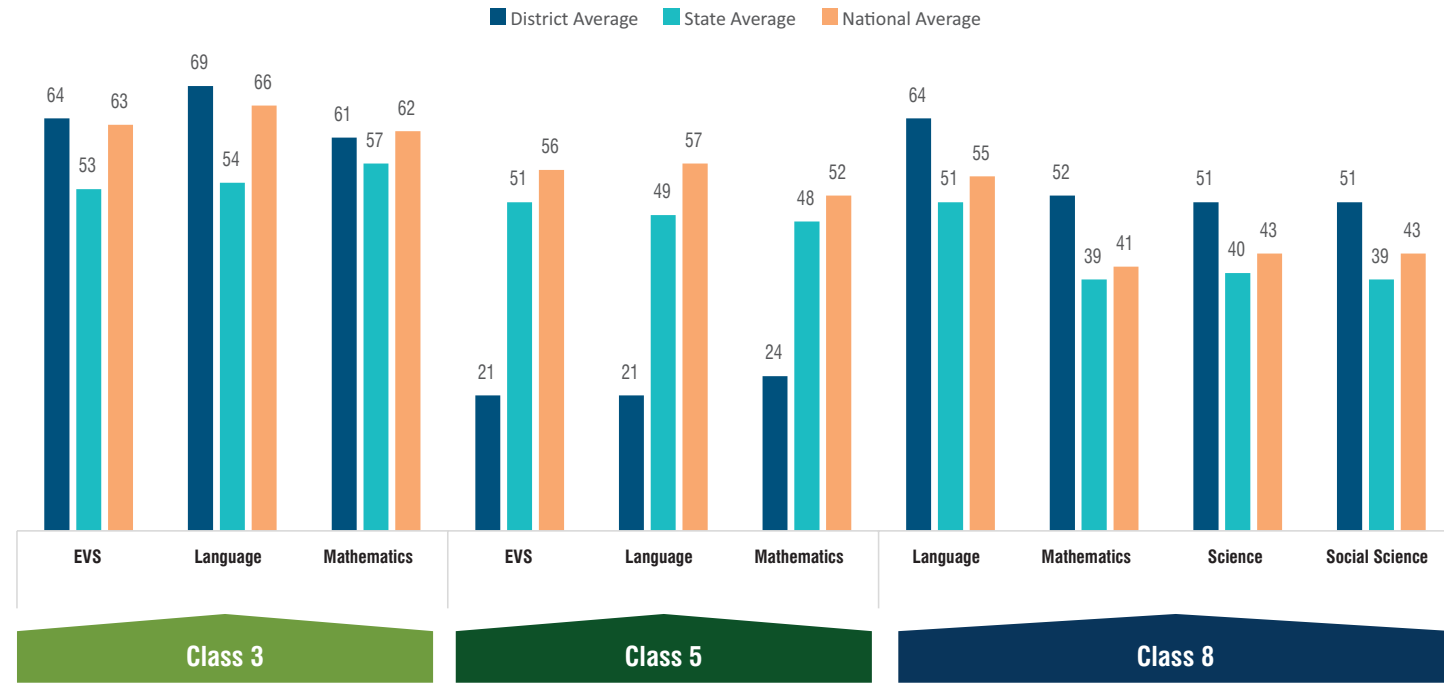
Class 3, 5 and 8



Unpriced — Printed Digitally

Published at the NAS Cell by Secretary, National Council of Educational Research and Training, Sri Aurobindo Marg, New Delhi 110016.

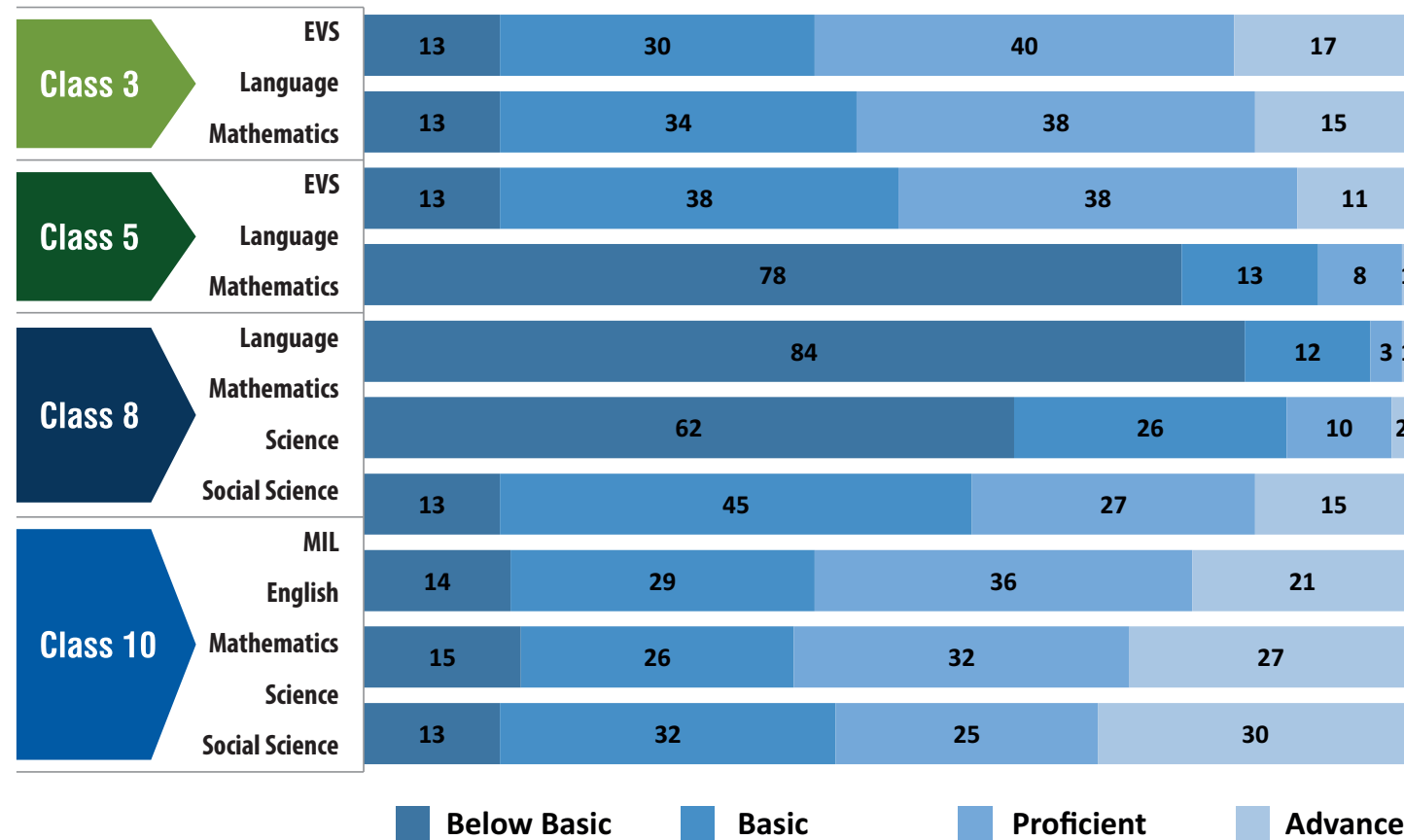
### Average Achievement (in percent correct)



### Performance by Gender

Subject	Level	Class 3		Class 5		Class 8	
		Boys	Girls	Boys	Girls	Boys	Girls
EVS	District	64	60	21	20	--	--
	State	53	53	51	51	--	--
	National	63	63	55	56	--	--
Language/English	District	70	53	20	22	64	64
	State	54	54	49	49	52	51
	National	66	67	56	57	55	56
Mathematics	District	61	55	24	24	51	53
	State	57	56	48	48	39	39
	National	62	62	52	52	41	41
Science	District	--	--	--	--	51	51
	State	--	--	--	--	40	39
	National	--	--	--	--	43	43
Social Science	District	--	--	--	--	50	52
	State	--	--	--	--	39	39
	National	--	--	--	--	42	43

### Percentage of Students by Performance Level



### Performance by Location

Subject	Level	Class 3		Class 5		Class 8	
		Rural	Urban	Rural	Urban	Rural	Urban
EVS	District	63	65	21	14	--	--
	State	53	55	51	50	--	--
	National	69	73	61	56	--	--
Language/English	District	69	69	21	8	65	46
	State	54	55	49	49	51	48
	National	74	70	61	58	54	53
Mathematics	District	59	62	24	29	54	35
	State	57	58	48	47	40	33
	National	72	72	67	62	43	35
Science	District	--	--	--	--	53	28
	State	--	--	--	--	41	35
	National	--	--	--	--	44	40
Social Science	District	--	--	--	--	54	29
	State	--	--	--	--	40	36
	National	--	--	--	--	44	45



### Performance by Management

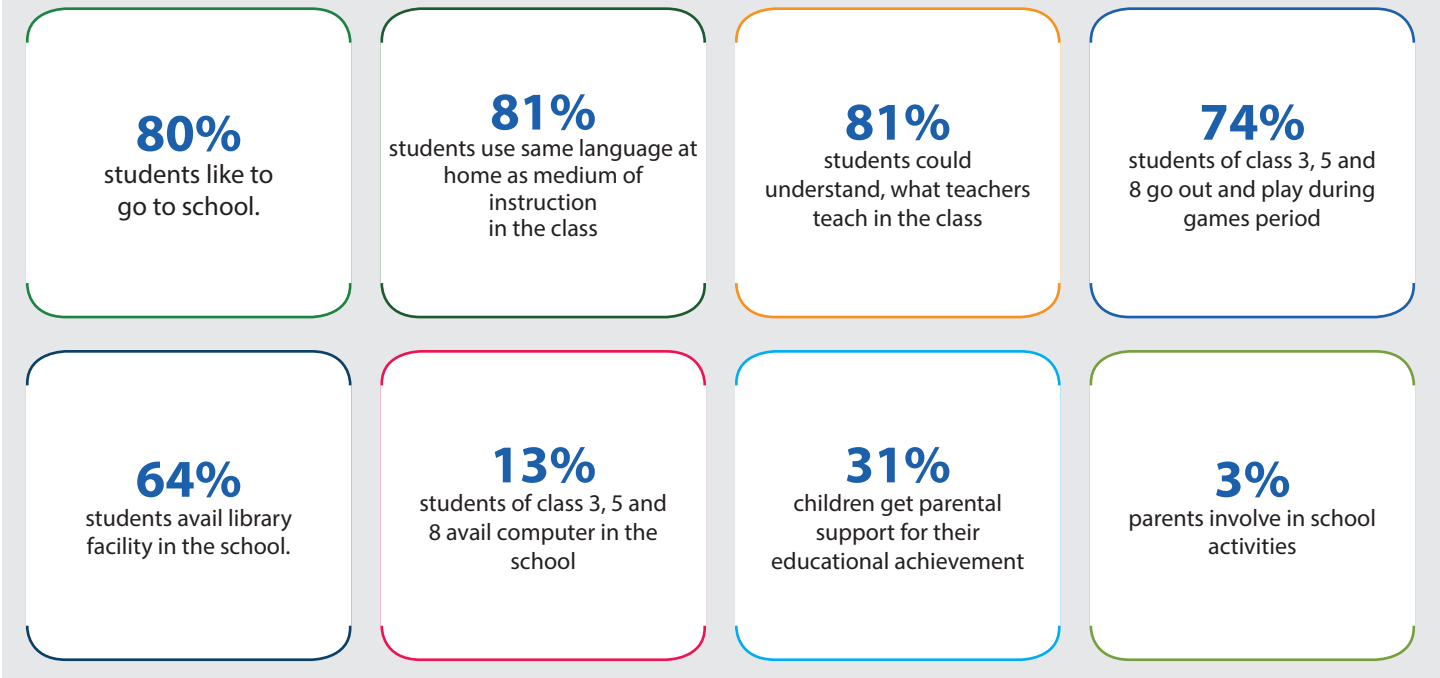
		Class 3		Class 5		Class 8	
		Govt.	Govt. Aided	Govt.	Govt. Aided	Govt.	Govt. Aided
EVS	District	45	41	41	61	--	--
	State	54	56	51	54	--	--
	National	63	41	56	35	--	--
Language/English	District	25	21	27	39	39	34
	State	57	57	50	52	53	50
	National	66	43	57	37	55	41
Mathematics	District	61	55	53	85	30	22
	State	56	59	48	51	41	37
	National	63	41	52	33	41	29
Science	District	--	--	--	--	31	22
	State	--	--	--	--	41	38
	National	--	--	--	--	43	30
Social Science	District	--	--	--	--	27	26
	State	--	--	--	--	41	38
	National	--	--	--	--	43	30



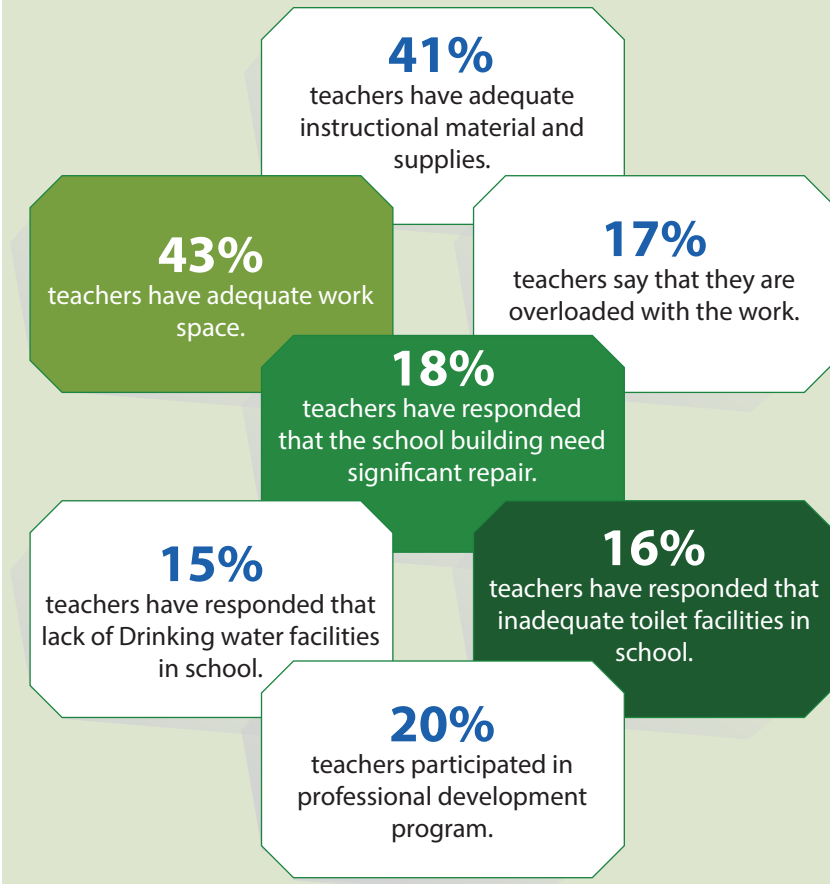
### Performance by Social Group

		Class 3				Class 5				Class 8			
		SC	ST	OBC	Oth.	SC	ST	OBC	Oth.	SC	ST	OBC	Oth.
EVS	District	61	43	68	65	21	20	21	19	--	--	--	--
	State	52	50	53	54	50	49	51	52	--	--	--	--
	National	63	61	64	64	55	54	56	57	--	--	--	--
Language/English	District	67	57	71	74	21	19	20	20	62	60	63	69
	State	54	51	54	55	48	49	49	50	51	44	52	52
	National	66	64	67	67	56	56	57	58	55	52	57	58
Mathematics	District	58	41	64	64	24	18	24	27	51	47	53	54
	State	56	49	57	57	48	44	49	50	39	34	39	38
	National	62	60	63	64	52	50	53	54	40	39	41	42
Science	District	--	--	--	--	--	--	--	--	51	46	51	50
	State	--	--	--	--	--	--	--	--	40	34	40	40
	National	--	--	--	--	--	--	--	--	42	41	44	44
Social Science	District	--	--	--	--	--	--	--	--	50	48	52	54
	State	--	--	--	--	--	--	--	--	39	33	39	40
	National	--	--	--	--	--	--	--	--	42	40	43	44

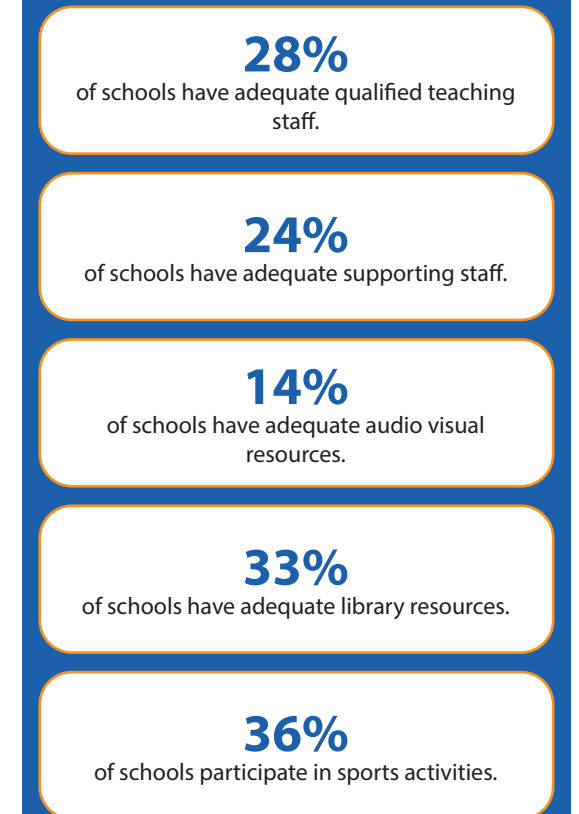
### What Children say about Schools?



### What teachers responded about school?



### What head teacher responded about school ?



Performance of the District in Learning Outcomes (LOs)

Class 3

LO Code	Learning Outcomes for Class 3	Average Performance (in percent)
Language		
L304	Reads small texts with comprehension i.e., identifies main ideas, details, sequence and draws conclusions	69
L312	Reads printed scripts on the classroom walls: poems, posters, charts etc	68
Mathematics		
M301	Reads and writes numbers up to 999 using place value	49
M302	Compares numbers up to 999 based on their place values	77
M303	Solves simple daily life problems using addition and subtraction of three digit numbers with and without regrouping	56
M304	Constructs and uses the multiplication facts (up till 10) in daily life situations	68
M305	Analyses and applies an appropriate number operation in the situation/ context	51
M306	Explains the meaning of division facts by equal grouping/sharing and finds it by repeated subtraction	59
M309	Identifies and makes 2D-shapes by paper folding, paper cutting on the dot grid, using straight lines etc.	71
M311	Fills a given region leaving no gaps using a tile of a given shape	40
M312	Estimates and measures length and distance using standard units like centimeters or meters & identifies relationships	36
M317	Reads the time correctly to the hour using a clock/watch	78
M318	Extends patterns in simple shapes and numbers	59
M319	Records data using tally marks, represents pictorially and draws conclusions	66
EVS		
E302	Identifies simple features (e.g. movement, at places found/ kept, eating habits, sounds) of animals and birds in the immediate surroundings.	58
E303	Identifies relationships with and among family members	66
E304	Identifies objects, signs (vessels, stoves, transport, means of communication, transport, signboards), places (types of houses/shelters, bus stand, petrol pump) activities (works people do, cooking processes) at home/school/ neighbourhood	64
E305	Describes need of food for people of different age groups, animals/birds, availability of food and water and use of water at home and surroundings	66
E307	Groups objects, birds, animals, features, activities according to differences/similarities using different senses. (e.g. appearance/place of living/ food/ movement/ likes-dislikes/ any other features)	67
E309	Identifies directions, location of objects/places in simple maps using signs/symbols/verbally	62
E310	Guesses properties, estimates quantities of materials/activities in daily life and verifies using symbols/non-standard units.	69
E311	Records observations, experiences, information on objects/activities/places visited in different ways and predicts patterns etc.	58
E313	Observes rules in games (local, indoor, outdoor)	32
E314	Voices opinion on good/bad touch, stereotypes for tasks/play/food in family w.r.t gender, misuse/wastage of food and water in family and school.	73

Class 5

LO Code	Learning Outcomes for Class 5	Average Performance (in percent)
Language		
L504	Reads and comprehends independently storybooks, news items/ headlines, advertisements etc.	22
L508	Reads text with comprehension, locates details and sequence of events	21
Mathematics		
M401	Applies operations of numbers in daily life situations	23
M412	Explores the area and perimeter of simple geometrical shapes (triangle, rectangle, square) in terms of given shape as a unit	18
M418	Calculates time intervals/duration of familiar daily life events by using forward or backward counting/addition and subtraction	31
M421	Represent the collected information in tables and bar graphs and draws inferences from these	25
M501	Reads and writes numbers bigger than 1000 being used in her/his surroundings	32
M504	Estimates sum, difference, product and quotient of numbers and verifies the same using different strategies like using standard algorithms or breaking a number and then using operation	15
M505	Finds the number corresponding to part of a collection	24
M506	Identifies and forms equivalent fractions of a given fraction	21
M508	Converts fractions into decimals and vice versa	22
M509	Classifies angles into right angle, acute angle, obtuse angle and represents the same by drawing and tracing	29
M512	Relates different commonly used larger and smaller units of length, weight and volume and converts larger units to smaller units and vice versa	26
M513	Estimates the volume of a solid body in known units	19
M514	Applies the four fundamental arithmetic operations in solving problems involving money, length, mass, capacity and time intervals	24
M515	Identifies the pattern in triangular number and square number	21
M516	Collects data related to various daily life situations, represents it in tabular form and as bar graphs and interprets it.	22
EVS		
E403	Identifies relationship with and among family members in extended family	16
E410	Records observations/experiences/information for objects, activities, phenomena, places visited in different ways and predicts patterns and activities/ phenomena	10
E501	Explains the super senses and unusual features (sight, smell, hear, sleep, sound, etc.) of animals and their responses to light, sound, food etc	16
E503	Describes the interdependence among animals, plants and humans	33
E504	Explains the role and functions of different institutions in daily life (Bank, Panchayat, cooperatives, police station, etc.)	21
E505	Establishes linkages among terrain, climate, resources (food, water, shelter, livelihood) and cultural life. (e.g. life in distant/difficult areas like hot/cold deserts).	14
E506	Groups objects, materials, activities for features/properties such as shape, taste, colour, texture, sound, traits etc.	24
E507	Traces the changes in practices, customs, techniques of past and present through coins, paintings, monuments, museum etc. and interacting with elders	19

LO Code	Learning Outcomes for Class 5	Average Performance (in percent)
E508	Guesses (properties, conditions of phenomena), estimates spatial quantities (distance, area, volume, weight etc.) and time in simple standard units and verifies using simple tools/set ups	16
E509	Records observations/experiences/information in an organized manner (e.g. in tables/ sketches/ bar graphs/ pie charts) and predicts patterns in activities/phenomena to establish relation between cause and effect	19
E510	Identifies signs, directions, location of different objects/landmarks of a locality /place visited in maps and predicts directions w.r.t. positions at different places for a location	29
E512	Voices opinions on issues observed/experienced and relates practices /happenings to larger issues of society.	29
E513	Suggests ways for hygiene, health, managing waste, disaster/emergency situations and protecting/saving resources	31

### Class 8

LO Code	Learning Outcomes for Class 8	Average Performance (in percent)
Language		
L813	Read textual/non-textual materials with comprehension and identifies the details, characters, main idea and sequence of ideas and events while reading	64
Mathematics		
M601	Solves problems involving large numbers by applying appropriate operations	58
M606	Solves problems on daily life situations involving addition and subtraction of fractions / decimals	69
M620	Finds out the perimeter and area of rectangular objects in the surroundings like floor of the class room, surfaces of a chalk box etc.	63
M621	Arranges given/collected information in the form of table, pictograph and bar graph and interprets them	59
M702	Interprets the division and multiplication of fractions	56
M705	Solves problems related to daily life situations involving rational numbers	60
M706	Uses exponential form of numbers to simplify problems involving multiplication and division of large numbers.	55
M707	Adds/subtracts algebraic expressions	69
M710	Solves problems related to conversion of percentage to fraction and decimal and vice versa	60
M717	Finds out approximate area of closed shapes by using unit square grid/ graph sheet	48
M719	Finds various representative values for simple data from her/his daily life contexts like mean, median and mode	58
M721	Interprets data using bar graph such as consumption of electricity is more in winters than summer	59
M801	Generalises properties of addition, subtraction, multiplication and division of rational numbers through patterns	34
M802	Finds rational numbers between two given rational numbers	50
M803	Proves divisibility rules of 2, 3,4, 5, 6, 9 and 11	70
M804	Finds squares, cubes, square roots and cube roots of numbers using different methods.	65
M808	Use various algebraic identities in solving problems of daily life.	22
M812	Verifies properties of parallelogram and establishes the relationship between them through reasoning	46
M818	Finds surface area and volume of cuboidal and cylindrical object	29
M819	Draws and interprets bar charts and pie charts	34

LO Code	Learning Outcomes for Class 8	Average Performance (in percent)
Science		
SCI703	Classifies materials and organisms based on properties/characteristics	54
SCI704	Conducts simple investigation to seek answers to queries	39
SCI705	Relates processes and phenomenon with causes	42
SCI708	Measures and calculates e.g., temperature; pulse rate; speed of moving objects; time period of a simple pendulum, etc	71
SCI710	Plots and interprets graphs	54
SCI711	Constructs models using materials from surroundings and explains their working	40
SCI801	Differentiates materials, organism and processes	60
SCI804	Relates processes and phenomenon with causes	65
SCI805	Explains processes and phenomenon	45
SCI807	Measures angles of incidence and reflection, etc.	57
SCI811	Applies learning of scientific concepts in day-to-day life	48
SCI813	Makes efforts to protect environment	63
Social Science		
SST605	Identifies latitudes and longitudes, e.g., poles, equator, tropics, States/UTs of India and other neighbouring countries on globe and the world map	50
SST610	Locates important historical sites, places on an outline map of India	51
SST625	Describes the functioning of rural and urban local government bodies in sectors like health and education	34
SST703	Explains preventive actions to be undertaken in the event of disasters	57
SST704	Describes formation of landforms due to various factors	43
SST722	Explains the significance of equality in democracy	52
SST726	Describes the process of election to the legislative assembly	70
SST731	Explains the functioning of media with appropriate examples from newspapers.	65
SST733	Differentiates between different kinds of markets	78
SST734	Traces how goods travel through various market places.	77
SST802	Describes major crops, types of farming and agricultural practices in her/his own area/state	61
SST805	Locates distribution of important minerals e.g. coal and mineral oil on the world map	32
SST807	Justifies judicious use of natural resources	41
SST809	Draws interrelationship between types of farming and development in different regions of the world	49
SST810	Distinguishes the modern period from the medieval and the ancient periods through the use of sources	54
SST815	Explains the origin, nature and spread of the revolt of 1857 and the lessons learned from it	57
SST816	Analyses the decline of pre-existing urban centers and handicraft industries and the development of new urban centers and industries in India during the colonial period	39
SST818	Analyses the issues related to caste, women, widow remarriage, child marriage, social reforms and the laws and policies of colonial administration towards these issues	44
SST823	Applies the knowledge of the Fundamental Rights to find out about their violation, protection and promotion in a given situation	40
SST827	Describes the process of making a law. (e.g. Domestic Violence Act, RTI Act, RTE Act)	60
SST831	Identifies the role of Government in providing public facilities such as water, sanitation, road, electricity etc., and recognizes their availability	52
SST833	Draws bar diagram to show population of different countries/India/states	71



**Uttar Pradesh did not participate in NAS class X cycle- 2 (2017-18)**

## Project Team

### MoE

- Smt. Anita Karwal, *Secretary, Department of School Education and Literacy (SE&L)*
- Shri. Maneesh Garg, *Joint Secretary, Department of School Education and Literacy (SE&L)*
- Shri. JP Pandey, *Director, Department of School Education and Literacy (SE&L)*

### NCERT

- Prof. Sridhar Srivastava, *I/c Director, NCERT*
- Prof. Indrani Bhaduri, *Head, ESD and National Coordinator, NAS*
- Dr. Sukhvinder, *Associate Professor, ESD*
- Dr. Vishal D. Pajankar, *Assistant Professor, ESD*
- Dr. Satya Bhushan, *Assistant Professor, ESD*
- Dr. Gulfam, *Assistant Professor, ESD*

### Project Supporting Staff (NCERT)

- Ms. Bhaswati De, *Data Manager*
- Mr. Sajid Khalil, *Senior Graphic Designer-cum-Visualizer*
- Mr. Puneet Bholra, *System Analyst*

### State Functionaries

State Directorate of Education, SCERTs, SIEs, DIETs, Schools

**For any clarification, please contact:**  
indranibhaduri@nationalachievementsurvey.co.in



---

**National Achievement Survey (NAS) Cell**

---

राष्ट्रीय शैक्षिक अनुसंधान और प्रशिक्षण परिषद्  
National Council of Educational Research and Training  
Sri Aurobindo Marg, New Delhi - 110016

[www.ncert.nic.in](http://www.ncert.nic.in)